

WPF-52/100

**Wood's<sup>®</sup>**

**SWIMMING POOL**

**DEHUMIDIFIER**



**WPF-52/100**

**SERIES**

**TECHNICAL MANUAL**



## CONNECTION OF THE CONDENSED WATER DRAINAGE FITTING AND ELECTRICAL CABLE

Connect condensed water drainage fitting ( $\frac{3}{4}$ " M) to a draining pipe.  
It should be always avoided to form a double siphon, which could obstruct the water flowing with the consequent risk of flooding the area.  
Removing the case in order to insert the pipe and electrical cable like represented here below.

1 Unscrew casing's screw.



2 Remove the casing.



3 Spin condensation pipe.

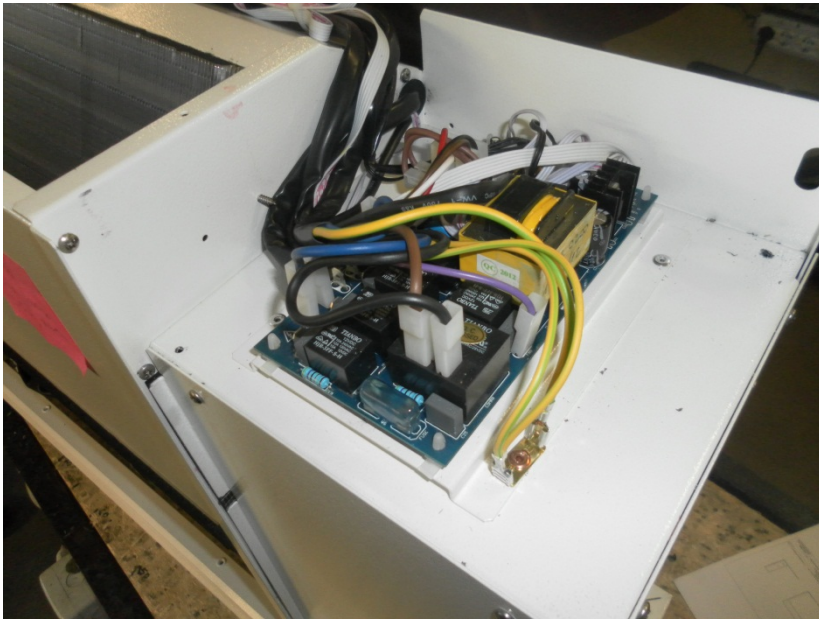


4 Remove plastic cover.



5 Connect power and remote humidostat wires.





**Electronic board**



## **ELECTRICAL CONNECTIONS**

### **Generality**



This machines series belongs to the electric appliances functioning at low tension (230 V).



Before every operation on the electric section, be sure that the electric supply is disconnected.



Main supply must be protected with a differential switch



**Close to the unit a main switch must be present.**

It must be verified that electric supply is corresponding to the unit electric nominal data (tension, phases, frequency) reported on the label in the front panel of the unit.  
Power connections must be made using a three-wire cable + neutral wire + ground cable.



**Power cable and line protection must be sized according norm and laws according with absorbed current of the machine (see technical data).**



**The line voltage fluctuations must not be more than  $\pm 5\%$  of the nominal value, while the voltage unbalance between one phase and another must not exceed 2%. If those tolerances should not be respected, please contact our Firm to provide proper devices.**



**Electric supply must be in the limits shown: in the opposite case warranty will terminate immediately.**



**Electrical connections therefore must be always done according to the instructions reported on the wiring diagram enclosed with the unit and norms and laws.**

Ground connection is compulsory. Installer must connect ground cable with a dedicated terminal on the apposite terminal block.